

ANNUAL REPORT 2016-2017

LIFE CARE FOUNDATIONS

Medical, Educational & Charitable Trust



LIFE CARE FOUNDATION

Central Office

Shop No 4, Moreshwar Apartment,
Near Aakar Tower, Geeta Nagar,
Bhayandar West.Thane-401101

LIFE CARE FOUNDATION

Branch Office

A-001, Heera Panaa Building
Gokul Village,Mira Road East
Thane-401107

Table of Contents

- 1. About Us**
- 2. Vision**
- 3. Mission**
- 4. Areas of Services**
- 5. Trustees Details**
- 6. Tasks of Board & Management**
- 7. Objectives for NGO**
- 8. Activities Details**
 - **Educational**
 - **Health Care**
 - **Community Health**
 - **Legal Awareness**
 - **Skill Developments**

Welcome to Life Care Foundations (LCF)

“LIFE CARE FOUNDATIONS” NGO registered in two provinces of INDIA in Thane Maharashtra (registered on April 26, 2011) and under Voluntary Social Welfare Organization. Registration under trust act state of registration Maharashtra Bombay Trust Act.

LCF is working for the last 6 years on issues like technical education, water Health care and income generation activities. We believe that all these are crucially linked and contribute towards overall fabric of our society

The organization believes in efficiency and efficient use of local resources including human resources. In order to provide family planning services, to improve health status, raise literacy rate, enhance existing skills and introduce income generating activities. Life Care Foundations avails the services of local resource persons. In addition to this organization gets support from district administration and line departments like education, health, family planning, social welfare.

Vision, Mission, Objectives, Areas of Services

VISION

Our vision is to create a self reliant, self confident and self aware society that helps themselves individually as well as collectively for the prosperity of human being.”

Mission

Our mission is to self empower the disadvantaged segment of community, including all men, women and children, through enhancing their skills and knowledge in education, health and socio economic solutions.”

OBJECTIVES

- ▶ To create awareness among the communities for collective action
- ▶ To motivate and mobilize the communities to participate in the socio economic development including family planning, health, education, Rural Water Supply and Sanitation (RWSS), vocational training and income generation activities.
- ▶ To assist the communities to eliminate social evils including narcotics
- ▶ To raise literacy rate of the community
- ▶ To provide equal opportunities to male and female members of the communities in skill development and disable care and rehabilitation

OUR AREAS OF SERVICES

Capacity Building
Health Care
Educational
Family Planning Etc..

Trustees Details

Dr. Rickky Jain



Mr. Abdul Rehman Quresi



Dr. Rajesh Rathi



Bindu Agrawal



Poornima Patil



Hitiksha Rajavat



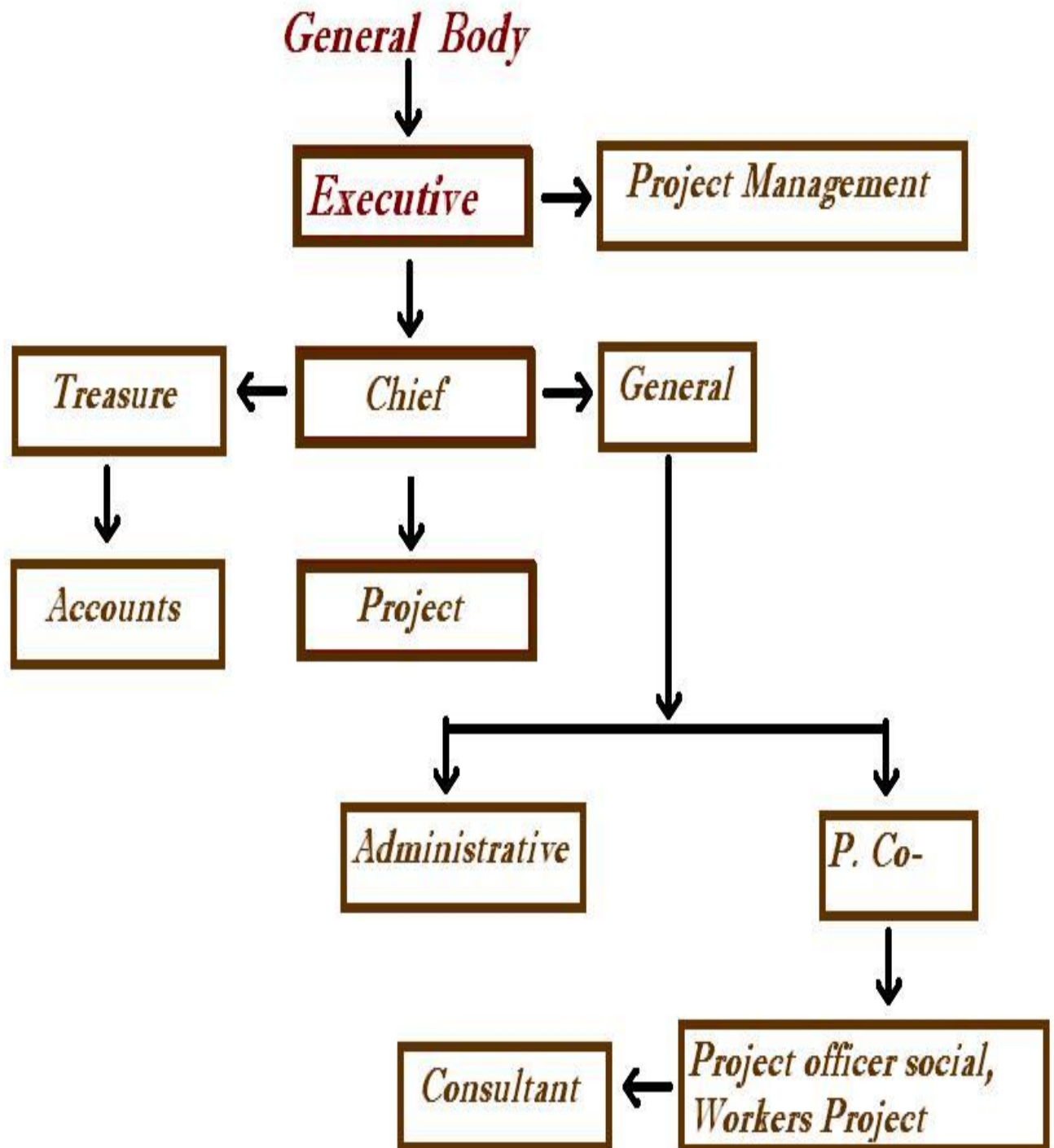
Mr. Dinkar Kamble



Mr. Vinod Pal



Jurisdiction & Tasks of Board & Management during 2016-17





- Vocational Training Center For Rural Areas
- Awareness Campaigns For Environment And Tree Plantation
- Sports Awareness Programs
- Legal Awareness Programs For Rural Areas
- Education Awareness Programs For Village Areas
- Personality Development
- Free Coaching Centre for underprivileged
- Career Counseling
- life skills development activities
- Special Education
- Health Awareness and Health Checkup Camp



Activities Information



programs

Life Care Foundation's overall programme is considered

"....conceptually and strategically brilliant in bringing together at the district level and in networks volunteer groups of citizens, activists, councilors, professionals and government officials... that give LCF's program its vital political development energy. Few organizations in India or elsewhere achieve this.

Life Care Foundations is now a national organization with one of the largest district level networks of voluntary citizens groups and organizations based in the Thane Maharashtra. This network enables LCF to move with speed throughout the country for advocacy for its causes and to assist women to solve their immediate problems at the district level.

Life Care Foundations has had a very enriching experience being able to implement some very innovative projects that have brought recognition for the Foundation.

Over the last 6 years the work of Life Care Foundation has developed into an over-arching Programme for 'Strengthening Civil Society for Women's Participation in Governance in India'. This Programme is operationalised by the key Programmes of the Foundation:

- **The Information Programme for Grassroots Organization and Action by Women**
- **The Programme for Strengthening Citizens' for Advocacy and Action for Women**
- **The Programme for Affirmative Legislation and Policies for Women**
- **Health programmer for Rural Areas.**

PERSONAL SAFETY EDUCATION



Personal Safety Education (PSE) is Life Care Foundation's key project and aims at enabling and empowering children within schools, institutions and through workshop mode with information & skills in order to prevent the risk of sexual abuse. The PSE project also inculcates skills for seeking help and reporting cases of attempted and/or continued sexual abuse to trusted adults. Children who report cases of attempted and continued sexual abuse are provided with psychotherapeutic support to facilitate their healing process.

The PSE project also involves awareness building and skill enhancement of adults like parents, teachers and institutional caretakers who are the primary stakeholders and caregivers in a child's life. These stakeholders are empowered with adequate information and skills with regard to child sexual abuse so that they can create strong safety and support networks around children in their respective environments. While children and their primary stakeholders are empowered, Life Care Foundations also constantly advocates with the school and NGO management to make systemic level changes within their current infrastructure, programmes, systems, policies etc. in order to sustain the social impact of PSE.



Personal Safety Education (PSE) project is conducted currently within private, semi-private, and government schools wherein children and their primary caregivers like parents, teachers, school authorities are targeted. Apart from conducting the PSE module, Life Care Foundations also advocates for the institutionalization of the PSE curriculum within the existing school system and motivates the senior management of the school to develop and/ strengthen the existing child protection policies and systems within their environment.

HEALTH CARE

We Are LIFE CARE FOUNDATIONS, an NGO dedicated to being an end-to-end community based solutions provider and a public-private partnership enabler in areas of health, education and livelihood for vulnerable and at-risk communities.



We are currently working with children and families at-risk in Thane Bombay and Maharashtra, providing them with an environment that helps them learn and mainstream into schools and livelihood opportunities. This is being done via homes, community centers and community based programs run by experts and volunteers who generously give their time and effort to help build a sustainable future for these children and their families.

Smiles, unrestrained laughter and hope are what drive us at Life Care Foundation. Today, our children and families have hope. Hope that they can integrate

in to society. Hope that they can learn and find good jobs. Hope that they can live good, meaningful lives.

COMMUNITY HEALTH

Lack of access to safe drinking water is a major cause of ill health and loss of productivity in impoverished rural communities. It is also the principal cause of life-threatening diseases among infants and children. Access to safe drinking water and a healthy living environment are overarching goals that shape LCF' health development programmes. Life Care Foundations works with government Primary Health Centres and follows a threefold approach, which includes preventive, promotive and curative health care services leveraging traditional knowledge in medicines and health practices.



Preventive

Life Care Foundations couples the establishment of sanitation infrastructure with school & community based hygiene education programmes. Children that adopt hygienic practices encourage

their parents to do the same. Additionally, children who are raised using toilets are comfortable with this practice and help to influence the sanitary practices in the community.

Promotive

In order to ensure that communities can access government health services, Life Care Foundation organizes health camps in cooperation with the staff from the village's primary health centre and other village level health staff in remote regions. As malaria is endemic in many areas of the state, Life Care Foundation prioritizes measures against this disease. For example, health committees distribute mosquito nets, promote early blood testing to prevent death, establish drug distribution centres, chlorinate wells and advertise government treatment programmes. Life Care Foundation also facilitates government health programs for maternal health care and for immunization through the Pulse Polio campaign. Health Committees in villages also push government officials to provide regular basic health services.

LEGAL AWARENESS

Legal awareness and legal literacy lie at the base of any effort toward legal empowerment. Critical knowledge of legal provisions and processes, coupled with the skills to use this knowledge to realize rights and entitlements will empower people to demand justice, accountability and effective remedies at all levels. Life Care Foundations produces a wide range of legal literacy materials, conducts legal awareness workshops for activists and the community, and also trains state functionaries on legal provisions and procedure.



Legal Awareness Program

LCF organizes legal awareness programmes for adolescent & women in Thane. We have well developed training modules on a wide range of laws and issues to make the process of understanding the law easy and enjoyable.

ENVIRONMENT AWARENESS

Environment, the physical and biological factors along with their chemical interactions that affect an organism, Environment, the surroundings of a physical system that may interact with the system by exchanging mass, energy, or other properties. As our lifestyles become more 'developed' by the day, so does the damage we do to the environment. Our every move, from watching television, to working at a computer, to taking a flight to our favorite holiday destination harms the environment in one way or the other. Air and water pollution levels are increasing all-over world day by day.

Available information shows that more than 700.00 children under five die from diarrhea in India alone. Never before has the need to use alternative resources, such as wind, solar and natural sources of energy been so high. "Life Care Foundation" is committed to promote, encourage and run the programmes to protect the environment and to develop the other sources of energy.

Published by : LIFE CARE FOUNDATIONS

Thanks